

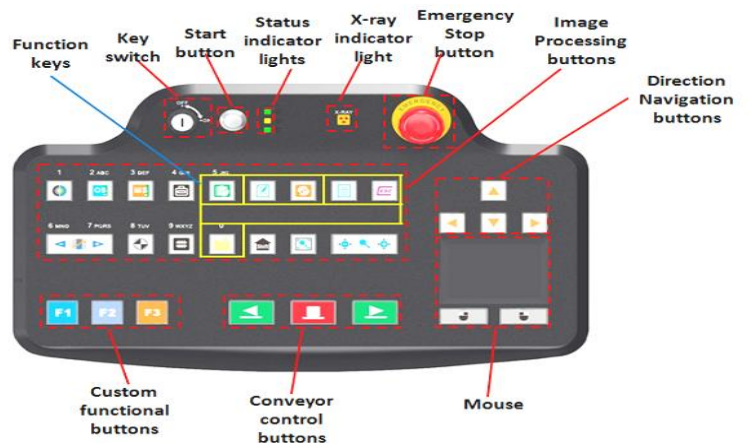


Hand baggage and parcels

The AT5030B is a popular x-ray inspection system with a tunnel opening of 50 cm x 30 cm. It is used widely for screening hand baggage and parcels at all security sites, including airports and customs locations.

Product Highlights

- * Radiation safe
- * High resolution, high penetration and good image quality
- * Multilingual operation
- * Automatic built in test and self diagnosis
- * Threat alert and material classification
- * Energy saving design
- * One key turn off with patent
- * Drugs and explosives detection



Physical Specifications

Tunnel size	500(W)*305(H) mm
Unit weight	300 kg
Unit size	1660(L)*746(W)*1165(H)

after packed on wooden pallet -

Gross weight	400 kg
Packing size	179*87*137cm

General Specifications

Conveyor Speed	0.22 m/s forward or backward
Conveyor height	639.5 mm
Conveyor capacity	100 kg
Frame design	304 stainless steel, 2-5 mm cold rolled plate and square steel, double-layer staggered lead impregnated safety curtain

X ray dose/inspection	≤4μSv
X ray leakage	≤1μSv/h at any point 5 cm outside the external surface. FDA standard is ≤5μSv/h

Steel penetration	38 mm guaranteed
Wire Resolution	AWG40 guaranteed
Penetration Resolution	AWG34 guaranteed
Spatial resolution:	1.0mm Horizontal, 1.0mm Vertical
Power Consumption	max. 0.5KW
Noise	<60 dB
Film Safety	Guarantee ASA/ISO1600 Film

X-ray Generator (single)

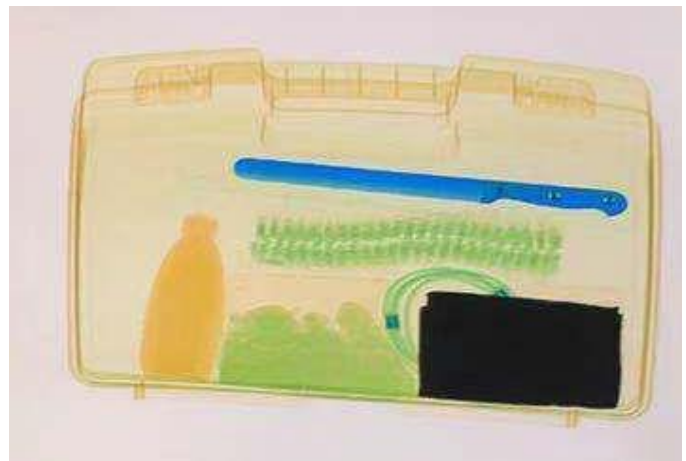
Anode Voltage	160 KV
Beam direction	Upword
Cooling / Duty Cycle	Sealed oil cooling /100%

Computer and other

Monitor	One 21.5-inch LCD monitor, 1920*1080
CPU	Intel (R) i3 (R) 3.3GHz
RAM	4GB
Hard Disk	2T
Keyboard	Special designed
Platform	Windows 10
Backup	Uninterrupted Power Supply
Electric roller	Three-phase

Operating Environment

Ops temperature	5°C-40°C 0%-90%(non-condensing)
Storage Temperature	-20°C to 60°C 10%-90%(non-condensing)
Operation Power	220V(+10% ~ -15%) 50±3Hz Options: 100-130V, 200-250V, 60Hz
UPS for the equipment	Options: 15mins, 30mins, 60mins etc



Imaging System

Detector	896 channels in an L-Shaped Array
Image processing	Color / black and white imaging, local enhancement, high penetration, low penetration, super enhancement, organic stripping, inorganic stripping, reverse color, brightening, darkening, gray level change/variable contrast, continuously zoom maximum 64x, pseudo color imaging, organics enhancement, suspicious item alarm and notation, edge enhancement imaging, etc.

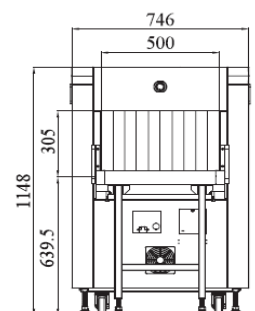
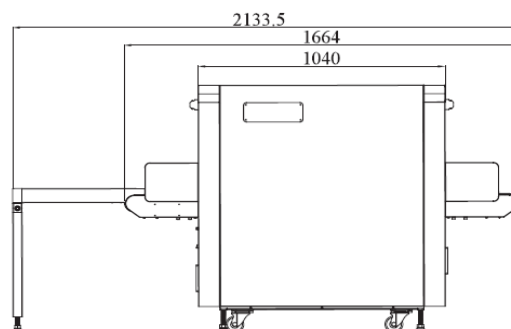
Explosives & Narcotics Detection	Suspicious organics highlight(atomic number $Z_{eff}=7,8,9$)
Suspicious Alarm	Alarm and box line the suspicious objects including hard to penetrate material, explosives and drugs

Threat Image Projection(TIP)	Inserting fictional, but realistic images of threat items into baggage during screening operation, for maintenance of vigilance, as well as training and assessment of image identification capability
------------------------------	--

Image pullback	30 images
Image Archive	Up to 50,000 images stored automatically, enable transferring to USB disk, and converting to JPG, BMP and other formats

Miscellaneous Functions	Time/date display, counters, user management, system-on/x-ray-on timers, power on self test, built-in diagnostic facilities, bidirection scanning, forced scanning, image search and export, system setting, system log, system standby and stimulant training,etc.
-------------------------	---

Options	Intelligent roller, remote work station, network integration, video monitoring, face recognition and baggage integration, recheck station, additional roller table, etc.
---------	--



SAFEGWAY INSPECTION SYSTEM LIMITED/SAFEGWAY INSPECTION SYSTEM COMPANY LIMITED

Add: Building A&E, Qifeng Digital Park, Nanwan Street, LongGang District, Shenzhen China

Tel: 0755-84656535 Email: info@chinasafeequipment.com www.chinasafeequipment.com